

Your washing machine

Congratulations – You have opted for a modern, high-quality domestic appliance manufactured by Bosch. The washing machine is distinguished by its economical energy consumption.

Each appliance which leaves our factory is inspected thoroughly to ensure that it functions properly and is in perfect condition.

For further information and a selection of our products go to our web site: www.bosch-home.com

Environmental disposal

Dispose of packaging in an environmentally friendly manner.

This appliance has been identified in accordance with the European Directive 2002/96/EG on Waste Electrical and Electronic Equipment (WEEE).

The Directive specifies the framework for an EU-wide valid return and recycling of waste appliances.

Contents

| | Page |
|----------------------------------|------|
| Intended use | 1 |
| Programmes | 1 |
| Setting programme | 3 |
| Washing | 3/4 |
| After washing | 4 |
| Individual settings | 5 |
| Important information | 6 |
| Overview of programmes | 7 |
| Safety instructions | 8 |
| Consumption values | 8 |
| Care | 9 |
| Information on the display panel | 9 |
| Maintenance | 10 |
| What to do if ... | 11 |

Intended use

- for use in the household only,
- for the washing of machine-washable textiles in a detergent solution,
- to be operated with cold drinking water and commercially available detergents and care products which are suitable for use in frontloading-washing machines.

- Do not leave children unattended near the washing machine!
- The appliance is not intended for use by young children or infirm persons without supervision.
- Keep pets away from the washing machine!

Programmes

For detailed overview of programmes -> page 7. Temperature and spin speed can be selected individually.

| | |
|---------------------|--|
| Cottons | hard-wearing textiles |
| Cottons Eco | hard-wearing textiles |
| Cottons Prewash | hard-wearing textiles |
| Cottons Easy-iron | hard-wearing textiles |
| Easy-Care | easy-care textiles |
| Easy-Care Intensive | easy-care textiles |
| Easy-Care Prewash | easy-care textiles |
| Mixed Load | easy-care textiles |
| Delicate/Silk | delicate washable textiles |
| Wool | hand/machine-washable textiles |
| Express 15' | short programme |
| Rinse/Freshen up | with subsequent spin cycle; for hand-washed items, starching or "freshen up" items, -> Page 6. |
| Spin | washing washed by hand |
| Drain | the rinsing water if ---- occurs |

Preparation

Correct installation according to separate installation instructions.

Checking the machine

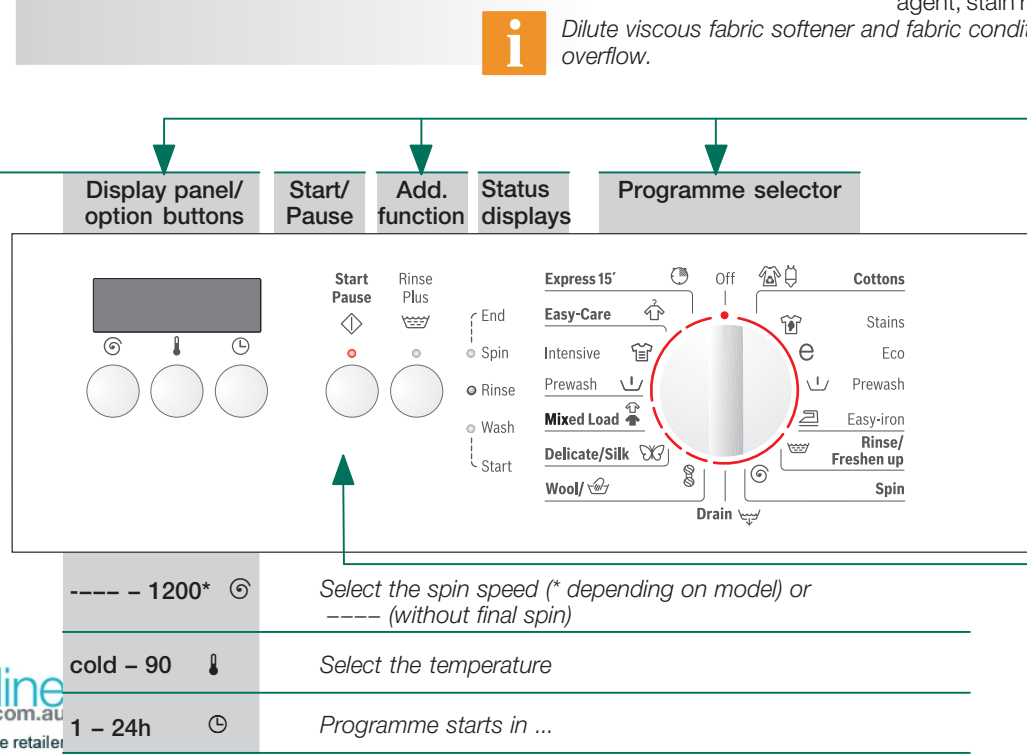
- Never switch on a damaged machine!
- Inform your customer service!

Turn on water tap

- Do not leave children unattended near the washing machine!
- The appliance is not intended for use by young children or infirm persons without supervision.
- Keep pets away from the washing machine!

Insert mains plug

- With dry hands only! Take hold of the plug only!



Set and adjust programme

For additional functions and option buttons see individual settings, page 5.

Programme selector for switching the machine on and off and for selecting the programme. Can be rotated in either direction.

Select Start/Pause

Washing

Before washing for the first time, wash once without any washing. -> page 6

Sorting and inserting the washing

Follow manufacturer's care information! According to the information on the care labels. According to type, colour, soiling and temperature. Do not exceed maximum load -> Page 7.

Add detergent and care product

Follow important instructions! See page 6! Insert large and small items of washing! Close the washing machine door. Take care not to trap any items of clothing between the loading door and rubber seal.

Dispenser I: Detergent for prewash

Dispenser II: Detergent for main wash, fabric softener, bleaching agent, stain remover

Dilute viscous fabric softener and fabric conditioner with water. Prevents blockage of the overflow.

Set and adjust programme

For additional functions and option buttons see individual settings, page 5.

Programme selector for switching the machine on and off and for selecting the programme. Can be rotated in either direction.

Select Start/Pause

Washing

Removing washing

Open washing machine door and remove washing.

If ---- (without final spin) active: Set programme selector to Drain or select spin speed. Select Start/Pause.

Turn off tap

Switch off

Set programme selector to Off.

End of programme when ...

... indicator light Spin flashes and End is indicated on the display panel.

Change programme ...

- Reselect programme.
- Select Start/Pause.

...or terminate

- Programmes with high temperature, first:
 - Cool washing: Select Rinse/Freshen up.
 - Washing machine door remains locked.
 - Select Off.
 - Select Spin or Drain.
 - Select Start/Pause.

Individual settings

Option buttons

You can change the spin speed and temperature beforehand and while the selected programme is running. Effects dependent on the programme progress.

(Spin speed rpm)

You can change the indicated spin speed. The maximum spin speed which can be selected depends on the set programme.

(Temperature °C)

You can change the indicated washing temperature. The maximum washing temperature which can be selected depends on the set programme.

(Start in)

The respective programme duration is displayed by selecting the programme. The programme start can be delayed before the programme begins. The Start in-time can be set in hour-steps up to maximum 24h. Keep pressing the button until the required number of hours is indicated (h=hour). Select Start/Pause. The start in-time begins counting down as soon as the programme starts. This indicated by the flashing indicator lights Start/Pause, Wash and by the flashing apostrophe ' between the number and h.

Additional functions

see also programme overview

Rinse plus

Additional rinse cycle. For areas with very soft water or for further improvement of the rinsing result.

Start/Pause

For starting or interrupting the programme.

Important information

Protecting the washing and the machine

- Empty pockets.
- Remove metal parts (paper clips, etc.).
- Wash delicates in the net/bag (tights, curtains, underwired bras).
- Close zips, button up covers.
- Brush sand out of pockets and collars.
- Remove curtain fittings or include in the net/bag.

Before washing for the first time

Do not put any washing in the washing machine! Turn on the tap, fill approx. 1 litre of water and then pour 1/2 measuring cup of detergent into dispenser II. Set programme selector to Easy-Care 60 °C and select Start/Pause. At the end of the programme set the programme selector to Off.

Washing with different degrees of soiling

| | |
|--------|--|
| Light | Wash new items separately. |
| Medium | Do not prewash. |
| Heavy | If required, pretreat stains. Select Cottons Stains additional function. Load less washing. Prewash. |

Soaking

Load washing of the same colour. Pour soaking agent/detergent into dispenser II according to the manufacturer's instructions. Set programme selector to Cottons 30 °C and select Start/Pause. After approx. 10 minutes select Start/Pause. After the required soaking time reselect Start/Pause if the programme is to be continued or change the programme.

Starching

Washing should not be treated with fabric softener. Liquid starch can be used in all wash programmes. Meter starch into the fabric softener dispenser according to manufacturer's specifications.

Dyeing/bleaching

Dye in small quantities only. Salt can corrode stainless steel. Observe the dye manufacturer's specification. Do not bleach laundry in the washing machine.

Freshen up

Use programme Rinse/Freshen up. For items, that have been tucked away or stored for a period of time, to remove creases caused by folding and storage and to eliminate odours. Use fabric conditioner for "fresh" smell.

Protection of the environment/conservation tips

- Utilise the maximum amount of washing for the particular programme.
- Wash normally soiled washing without prewash.
- Instead of Cottons Stains 90 °C select Cottons Eco 60 °C programme. Comparable cleaning result with significantly lower energy consumption.
- Meter detergent according to the manufacturer's instructions and water hardness.
- If the washing is then dried in the tumble dryer, select spin speed according to the instructions of the dryer manufacturer.

| Programme | Max. °C | Type of washing | Additional functions: information |
|----------------------|------------|--|---|
| Cottons | cold-60 °C | Hard-wearing textiles, heat-resistant textiles made of cotton or linen | Rinse plus |
| Cottons Stains | cold-90 °C | | |
| Cottons Eco | cold-60 °C | | |
| Cottons Prewash | cold-90 °C | | |
| Cottons Easy-iron | cold-60 °C | | |
| Easy-Care | cold-60 °C | Easy-care textiles made of cotton, linen, synthetic fibres or blended fabrics | Rinse plus |
| Easy-Care Intensive | cold-60 °C | | |
| Easy-Care Prewash | cold-60 °C | | |
| Mixed Load | cold-40 °C | Textiles made of cotton and easy-care textiles | Rinse plus Different types of washing can be washed together |
| Delicate/Silk | cold-40 °C | For delicate, washable textiles, e.g. made of silk, satin, synthetic fibres or blended fabrics (e.g. curtains) | Rinse plus no spin cycle between the rinse cycles |
| Wool | cold-40 °C | Hand or machine-washable wool or rich-wool textiles | Especially gentle wash programme to prevent shrinkage, prolonged programme pauses (textiles rest in the detergent solution). Short programme approx. 15 minutes; suitable for refreshing |
| Express 15' | cold-40 °C | Easy-care textiles made of cotton, linen, synthetic fibres or blended fabrics | Short programme approx. 15 minutes; suitable for refreshing |

Additional programmes

Programmes without prewash - pour detergent into dispenser II, programmes with prewash - divide detergent between dispensers I and II.

Robert Bosch Hausgeräte GmbH
Carl-Wery Str. 34
81739 München / Germany

WAE24271AU
WAE20261AU

9000 355 204
1009

Consumption values

| Programme | Load | Current** | Water** | Programme duration** |
|--------------------------|--------|-----------|---------|----------------------|
| Cottons Stains 40 °C * | 6.5 kg | 0.65 kWh | 56 l | 2:51 h |
| Cottons Stains 60 °C | 6.5 kg | 1.30 kWh | 56 l | 3:09 h |
| Cottons Eco 60 °C | 6.5 kg | 1.19 kWh | 47 l | 2:35 h |
| Cottons Stains 90 °C | 6.5 kg | 2.00 kWh | 66 l | 2:31 h |
| Easy-Care 40 °C | 3 kg | 0.55 kWh | 48 l | 0:59 h |
| Mixed Load 30 °C | 3 kg | 0.35 kWh | 48 l | 0:52 h |
| Delicate/Silk 30 °C | 2 kg | 0.28 kWh | 48 l | 0:44 h |
| Wool/ 30 °C | 2 kg | 0.20 kWh | 32 l | 0:53 h |

* Programme setting with maximum spin speed for testing according to or in accordance with AS/NZS 2040.2 and AS/NZS 6400.
** The values deviate from the indicated values depending on water pressure, water hardness, water inlet temperature, room temperature, type and amount of washing and degree of soiling, utilised detergent, fluctuations in the mains voltage and selected additional functions.

Safety instructions

- Read and follow the operating and installation instructions and all other information enclosed with the washing machine.
- Retain documents for subsequent use.

Risk of electric shock

- Never pull out the mains plug by tugging the power cord!
- Never insert/pull out the mains plug with damp hands.

Risk of injury

- Washing machine door may become very hot.
- Caution when draining hot detergent solution.
- Do not climb on the washing machine.
- Do not lean on the open washing machine door.
- Do not touch the drum in case it is still spinning.
- Caution when opening the detergent drawer while washing machine is running!

Risk of poisoning

Risk of suffocation

Danger to life

On redundant appliances:

- Pull out the mains plug.
- Sever the power cord and discard together with the plug.
- Destroy the lock on the washing machine door. This will prevent children from locking themselves in and suffocating.

Risk of explosion

- Caused by detergents containing solvents, e.g. stain remover/ items of washing pretreated with solvent naphtha may result in an explosion after being loaded into the washing machine. Beforehand thoroughly rinse items of washing by hand.

Care

Machine housing, control panel

- Wipe with a soft, damp cloth.
- Do not use any abrasive cloths, sponges or cleaning agents (stainless-steel cleaner).
- Immediately remove washing and cleaning agent residue.
- Do not clean the appliance with a water jet.

Clean the detergent drawer ...

... if it contains detergent or fabric softener residue.

- Pull out, depress insert, completely remove.
- Open the cover.
- Clean with water and dry.
- Close and lock the cover (place cylinder on guide pin).
- Insert detergent drawer.

Leave detergent drawer open so that residual water can evaporate.

Drum

Leave washing machine door open so that the drum can dry out.
Rust stains - use chlorine-free cleaning agent, not steel wool.

Descaling *No washing in the machine!*

Descale according to the instructions of the descaling agent manufacturer, not required for correct detergent dosage

Information on the display panel

| | |
|----|--|
| E2 | Motor fault. Call customer service! |
| E3 | Close the washing machine door properly; washing may be caught. |
| E5 | Turn on the tap, supply hose kinked/jammed; clean filter -> page 10, water pressure too low. |
| E6 | Detergent solution pump blocked; clean the detergent solution pump -> page 10. Drainage hose / waste pipe blocked; clean the drainage hose at the siphon -> page 10. |
| E8 | Turn off the tap and call customer service. |

Maintenance

Detergent-solution pump

Set programme selector to **Off**, pull out the mains plug.

- Open and remove service flap.
- For models with drainage hose: Take drainage hose out of the holder and pull out of the housing. Remove sealing cap, allow detergent solution to flow out. Press on sealing cap and insert drainage hose into the holder.
- For models without drainage hose: Carefully unscrew pump cover until the detergent solution begins to run out. When the service flap is half full, screw back the pump cover and empty the service flap. Repeat steps until all the detergent solution has run out.
- Carefully unscrew the pump cover (residual water).
- Clean the interior, pump cover thread and pump housing (fan impeller in the detergent-solution pump must rotate).
- Reinsert and screw on pump cover.
- Insert and close service flap.

To prevent unused detergent from flowing into the outlet during the next wash: Pour 1 litre of water into dispenser II and select the **Drain** programme.

Drainage hose at the siphon

Set programme selector to **Off**, pull out the mains plug.

- Loosen the hose clamp, carefully remove the drainage hose (residual water).
- Clean the drainage hose and siphon connecting piece.
- Reattach the drainage hose and secure the connection with the hose clamp.

Filters in the water supply

Release water pressure in the supply hose:

- Turn off the tap!
- Select any programme (except **Spin**/ **Drain**).
- Press **Start/Pause** . Leave programme for approx. 40 seconds.
- Set programme selector to **Off**.
- Remove hose from tap.
- Clean filter with small brush.
- Depending on the model, remove hose from the rear of the appliance and clean the filter.
- Connect the hose and check for leaks.

What to do if ...

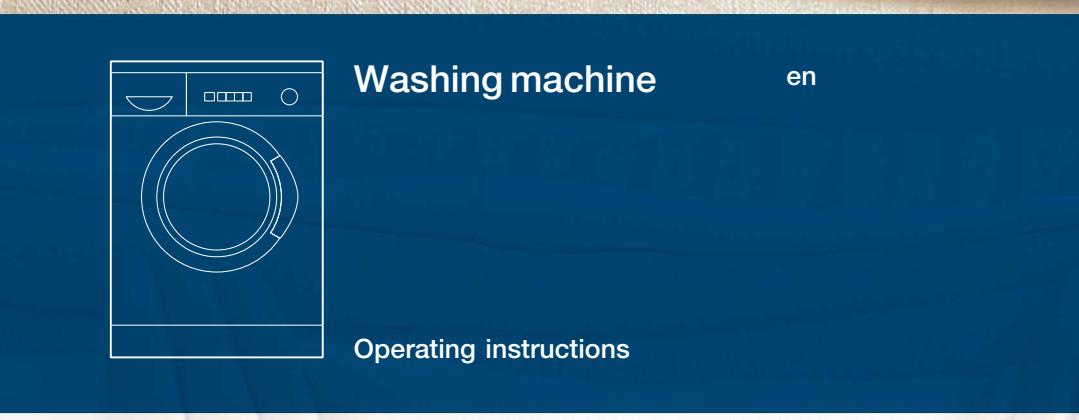
- Water is running out. - Correctly attach/replace drainage hose. - Tighten screw-fitting on the supply hose.
- Water not flowing in. Detergent not washed in. - **Start/Pause** not selected? - Tap not open? - Filter blocked? Clean filter -> page 10. - Supply hose kinked or jammed?
- Washing machine door cannot be opened. - Safety function active. Wait approx. 2 minutes. - ---- (without final spin) selected?
- Programme does not start. - **Start/Pause** selected? - Door closed?
- Detergent solution is not drained. - Clean detergent-solution pump -> page 10. - Clean outlet pipe and/or drainage hose.
- Washing not spun correctly. - Distribute small and large items of washing in the drum.
- Spin cycle actuated several times. - Not a fault - unbalanced load detection system adjusts imbalance.
- Water not visible in the drum. - Not a fault - water below the visible area
- Residual water in the dispenser for care product. - Not a fault - effect of the care product not impaired.
- Odour formation in the washing machine. - Run **Cottons** **Stains** **90 °C** programme without washing. Use standard detergent.
- Foam is coming out of the detergent drawer. - Too much detergent used? Mix 1 tablespoon of fabric softener with 1/2 litre of water and pour into compartment II (*not with outdoor fabrics!*). - Reduce detergent dosage for the next wash cycle.
- Vibrations during spin cycle. - Appliance feet fixed? Secure appliance feet -> *Installation instructions*. - Transportation safety devices removed? Remove transportation safety devices -> *Installation instructions*.
- Display panel/indicator lights do not function while the appliance is running. - Power failure? - Fuse tripped? Switch on/replace fuse. - If the fault occurs repeatedly, call customer service.
- Programme progress longer than usual. - Not a fault - unbalanced load detection system adjusts imbalance by repeatedly distributing the washing. - Not a fault - foam detection system active - a rinse cycle is started.
- Detergent residue on the washing. - Occasionally phosphate-free detergents contain water-insoluble residue. - Select **Rinse/Freshen up** or brush the laundry after washing.
- If a fault cannot be rectified or a repair is required: - Set programme selector to **Off** and pull out the mains plug. - Turn off the tap and call customer service -> *Installation instructions*.

Operating instructions

Washing machine en

BOSCH

Read these instructions before switching on the washing machine!
Also follow the separate installation instructions.
Follow the safety instructions on page 8!



Your washing machine

Congratulations – You have opted for a modern, high-quality domestic appliance manufactured by Bosch. The washing machine is distinguished by its economical energy consumption.

Each appliance which leaves our factory is inspected thoroughly to ensure that it functions properly and is in perfect condition.

For further information and a selection of our products go to our web site: www.bosch-home.com

Environmental disposal

Dispose of packaging in an environmentally friendly manner.

This appliance has been identified in accordance with the European Directive 2002/96/EG on Waste Electrical and Electronic Equipment (WEEE).

The Directive specifies the framework for an EU-wide valid return and recycling of waste appliances.



Contents

Page

| | |
|----------------------------------|-----|
| Intended use | 1 |
| Programmes | 1 |
| Setting programme | 3 |
| Washing | 3/4 |
| After washing | 4 |
| Individual settings | 5 |
| Important information | 6 |
| Overview of programmes | 7 |
| Safety instructions | 8 |
| Consumption values | 8 |
| Care | 9 |
| Information on the display panel | 9 |
| Maintenance | 10 |
| What to do if ... | 11 |

Intended use

- for use in the household only,
 - for the washing of machine-washable textiles in a detergent solution,
 - to be operated with cold drinking water and commercially available detergents and care products which are suitable for use in frontloading-washing machines.
- ⚠ – Do not leave children unattended near the washing machine!
- The appliance is not intended for use by young children or infirm persons without supervision.
- Keep pets away from the washing machine!

Preparation

⚠ Correct installation according to separate installation instructions.

Checking the machine

- Never switch on a damaged machine!
- Inform your customer service!

Turn on water tap

Insert mains plug

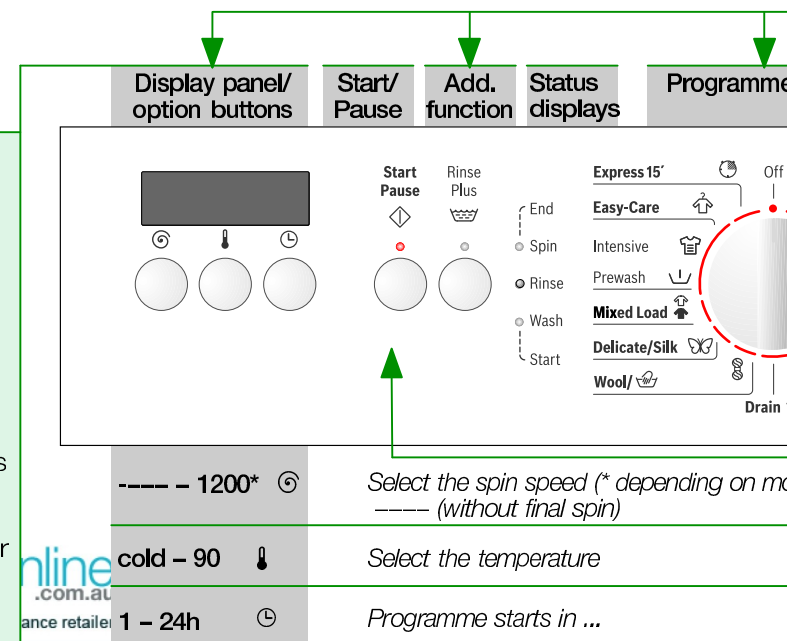
⚠ With dry hands only!
Take hold of the plug only!

i Dilute viscous fabric softener to avoid overflow.

Programmes

For detailed overview of programmes → page 7.
Temperature and spin speed can be selected individually.

| | |
|---------------------|---|
| Cottons | hard-wearing textiles |
| Cottons Stains | hard-wearing textiles |
| Cottons Eco e | |
| Cottons Prewash | |
| Cottons Easy-iron | |
| Easy-Care | easy-care textiles |
| Easy-Care Intensive | |
| Easy-Care Prewash | |
| Mixed Load | easy-care textiles |
| Delicate/Silk | delicate washable textiles |
| Wool | hand/machine-washable textiles |
| Express 15' | short programme |
| Rinse/Freshen up | with subsequent spin cycle; for hand-washed items, starching or "freshen up" items, → Page 6. |
| Spin | washing washed by hand |
| Drain | the rinsing water if ----- occurs |



Before washing for the first time, wash once without any washing. -> page 6

Sorting and inserting the washing

Follow manufacturer's care information!
According to the information on the care labels.
According to type, colour, soiling and temperature.
Do not exceed maximum load -> Page 7.

Follow important instructions! See page 6!

Insert large and small items of washing! Close the washing machine door. Take care not to trap any items of clothing between the loading door and rubber seal.

Add detergent and care product

Meter accordingly:
Washing amount, soiling, water hardness (ask your water supply company) and manufacturer's instructions. Pour liquid detergent into the appropriate dispenser and place in the drum.

Dispenser I: Detergent for prewash

Dispenser ☼: Fabric softener, starch

Dispenser II: Detergent for main wash, fabric softener, bleaching agent, stain remover

... fabric softener and fabric conditioner with water. Prevents blockage of the

Set and adjust programme

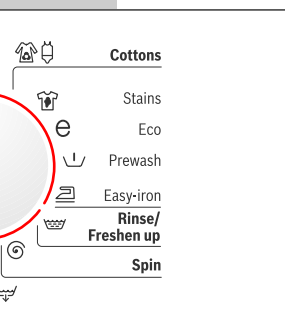
For additional functions and option buttons see individual settings, page 5.



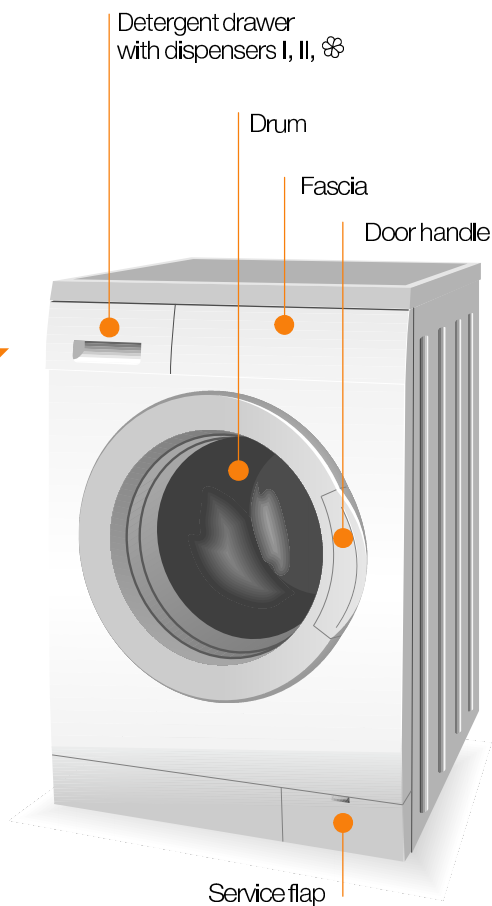
Programme selector for switching the machine on and off and for selecting the programme. Can be rotated in either direction.

Select Start/Pause ◊

selector



Washing



1

2



3

Removing washing

Open washing machine door and remove washing.
If ---- (without final spin) active: Set programme selector to **Drain** ☼ or select spin speed. Select **Start/Pause** ◊.
Remove any foreign objects – risk of rusting.

Turn off tap

Switch off

Set programme selector to **Off**.

End of programme when ...

... indicator light **Spin** flashes and **End** is indicated on the display panel.

Change programme ...

If you have mistakenly selected a wrong programme:
– Reselect programme.
– Select **Start/Pause** ◊.

...or terminate

Programmes with high temperature, first:
– Cool washing: Select **Rinse/Freshen up** ☼.
Washing machine door remains locked.
– Select **Off**.
– Select **Spin** ☼ or **Drain** ☼.
– Select **Start/Pause** ◊.

Washing

Australia's largest online appliance retailer

Individual settings

Option buttons

You can change the spin speed and temperature beforehand and while the selected programme is running. Effects dependent on the programme progress.

⌚ (spin speed rpm)

You can change the indicated spin speed. The maximum spin speed which can be selected depends on the set programme.

🌡️ (Temperature °C)

You can change the indicated washing temperature. The maximum washing temperature which can be selected depends on the set programme.

⌚ (Start in)

The respective programme duration is displayed by selecting the programme. The programme start can be delayed before the programme begins. The Start in-time can be set in hour-steps up to maximum 24h. Keep pressing the ⌚ button until the required number of hours is indicated (h=hour). Select **Start/Pause** ⏸. The start in-time begins counting down as soon as the programme starts. This indicated by the flashing indicator lights **Start/Pause** ⏸, **Wash** and by the flashing apostrophe ' between the number and **h**.

Additional functions *see also programme overview*

Rinse plus 🌊 Additional rinse cycle. For areas with very soft water or for further improvement of the rinsing result.

Start/Pause ⏸

For starting or interrupting the programme.



Important information



Protecting the washing and the machine

- Empty pockets.
- Remove metal parts (paper clips, etc.).
- Wash delicates in the net/bag (tights, curtains, underwired bras).
- Close zips, button up covers.
- Brush sand out of pockets and collars.
- Remove curtain fittings or include in the net/bag.



Before washing for the first time

Do not put any washing in the washing machine! Turn on the tap, fill approx. 1 litre of water and then pour ½ measuring cup of detergent into dispenser II. Set programme selector to **Easy-Care** 🌊 60 °C and select **Start/Pause** ⏸.

At the end of the programme set the programme selector to **Off**.



Washing with different degrees of soiling

| | | |
|-------|--|--|
| | | Wash new items separately. |
| Light | | Do not prewash. |
| | | If required, pretreat stains. Select Cottons 🌊 🌡️ 30 °C and select Stains 🌊 additional function. |
| Heavy | | Load less washing. |
| | | Prewash. |



Soaking *Load washing of the same colour*

Pour soaking agent/detergent into dispenser II according to the manufacturer's instructions. Set programme selector to **Cottons** 🌊 🌡️ 30 °C and select **Start/Pause** ⏸. After approx. 10 minutes select **Start/Pause** ⏸. After the required soaking time reselect **Start/Pause** ⏸ if the programme is to be continued or change the programme.



Starching *Washing should not be treated with fabric softener*

Liquid starch can be used in all wash programmes. Meter starch into the fabric softener dispenser 🌊 according to manufacturer's specifications.



Dyeing/bleaching

Dye in small quantities only. Salt can corrode stainless steel. Observe the dye manufacturer's specification. Do **not** bleach laundry in the washing machine.



Freshen up *Use programme Rinse/Freshen up 🌊*

For items, that have been tucked away or stored for a period of time, to remove creases caused by folding and storage and to eliminate odours. Use fabric conditioner for "fresh" smell.



Protection of the environment/conservation tips

- Utilise the maximum amount of washing for the particular programme.
- Wash normally soiled washing without prewash.
- Instead of **Cottons** 🌊 🌡️ 90 °C select **Cottons** 🌊 🌡️ Eco 60 °C programme. Comparable cleaning result with significantly lower energy consumption.
- Meter detergent according to the manufacturer's instructions and water hardness.
- If the washing is then dried in the tumble dryer, select spin speed according to the instructions of the dryer manufacturer.

Programme overview → Pay attention to the Consumption values table on page 8 and the information on page 6

| Programmes | °C | Max. | Type of washing | Additional functions; information |
|---------------|------------|--------|--|--|
| Cottons | cold-60 °C | | | |
| Cottons | cold-90 °C | | | |
| Cottons | cold-60 °C | 6.5 kg | Hard-wearing textiles, heat-resistant textiles made of cotton or linen | Rinse plus |
| Cottons | cold-90 °C | | | |
| Cottons | cold-60 °C | | | |
| Easy-Care | | | | |
| Easy-Care | cold-60 °C | 3 kg | Easy-care textiles made of cotton, linen, synthetic fibres or blended fabrics | Rinse plus |
| Easy-Care | | | | |
| Mixed Load | cold-40 °C | | Textiles made of cotton and easy-care textiles | Rinse plus ; Different types of washing can be washed together |
| Delicate/Silk | cold-40 °C | | For delicate, washable textiles, e.g. made of silk, satin, synthetic fibres or blended fabrics (e.g. curtains) | Rinse plus ; no spin cycle between the rinse cycles |
| Wool | cold-40 °C | 2 kg | Hand or machine-washable wool or rich-wool textiles | Especially gentle wash programme to prevent shrinkage, prolonged programme pauses (textiles rest in the detergent solution). |
| Express 15' | cold-40 °C | | Easy-care textiles made of cotton, linen, synthetic fibres or blended fabrics | Short programme approx. 15 minutes; suitable for refreshing |

Additional programmes

Programmes without prewash → pour detergent into dispenser II, programmes with prewash → divide detergent between dispensers I and II.

Rinse/Freshen up , Spin , Drain

Robert Bosch Hausgeräte GmbH
Carl-Wery Str. 34
81739 München / Germany

WAE24271AU
WAE20261AU

9000 355 204
1009

Safety instructions

- Read and follow the operating and installation instructions and all other information enclosed with the washing machine.
 - Retain documents for subsequent use.
- Risk of electric shock**
- Never pull out the mains plug by tugging the power cord!
 - Never insert/pull out the mains plug with damp hands.
- Risk of injury**
- Washing machine door may become very hot.
 - Caution when draining hot detergent solution.
 - Do not climb on the washing machine.
 - Do not lean on the open washing machine door.
 - Do not touch the drum in case it is still spinning.
 - Caution when opening the detergent drawer while washing machine is running!
- Risk of poisoning**
- Risk of suffocation**
- Keep detergents and care products out of the reach of children.
 - Keep packaging, plastic film and packaging parts out of the reach of children.
- Danger to life**
- On redundant appliances:
- Pull out the mains plug.
 - Sever the power cord and discard together with the plug.
 - Destroy the lock on the washing machine door. This will prevent children from locking themselves in and suffocating.
- Risk of explosion**
- Caused by detergents containing solvents, e.g. stain remover/ items of washing pretreated with solvent naphtha may result in an explosion after being loaded into the washing machine. Beforehand thoroughly rinse items of washing by hand.

Consumption values

| Programme | Load | Current** | Water** | Programme duration** |
|----------------------|--------|-----------|---------|----------------------|
| Cottons 40 °C * | 6.5 kg | 0.65 kWh | 56 l | 2:51 h |
| Cottons 60 °C | 6.5 kg | 1.30 kWh | 56 l | 3:09 h |
| Cottons 60 °C | 6.5 kg | 1.19 kWh | 47 l | 2:35 h |
| Cottons 90 °C | 6.5 kg | 2.00 kWh | 66 l | 2:31 h |
| Easy-Care 40 °C | 3 kg | 0.55 kWh | 48 l | 0:59 h |
| Mixed Load 30 °C | 3 kg | 0.35 kWh | 48 l | 0:52 h |
| Delicate/Silk 30 °C | 2 kg | 0.28 kWh | 48 l | 0:44 h |
| Wool 30 °C | 2 kg | 0.20 kWh | 32 l | 0:53 h |

* Programme setting with maximum spin speed for testing according to or in accordance with AS/NZS 2040.2 and AS/NZS 6400.

** The values deviate from the indicated values depending on water pressure, water hardness, water inlet temperature, room temperature, type and amount of washing and degree of soiling, utilised detergent, fluctuations in the mains voltage and selected additional functions.

Care



- Risk of electric shock!
Pull out the mains plug!
- Risk of explosion! No solvents!

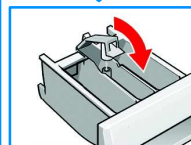
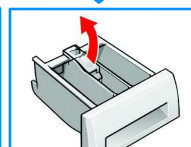
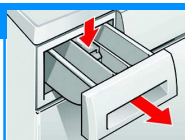
Machine housing, control panel

- Wipe with a soft, damp cloth.
- Do not use any abrasive cloths, sponges or cleaning agents (stainless-steel cleaner).
- Immediately remove washing and cleaning agent residue.
- Do not clean the appliance with a water jet.

Clean the detergent drawer ...

... if it contains detergent or fabric softener residue.

1. Pull out, depress insert, completely remove.
2. Open the cover.
3. Clean with water and dry.
4. Close and lock the cover (place cylinder on guide pin).
5. Insert detergent drawer.



Leave detergent drawer open so that residual water can evaporate.

Drum

Leave washing machine door open so that the drum can dry out.
Rust stains – use chlorine-free cleaning agent, not steel wool.

Descaling No washing in the machine!

Descale according to the instructions of the descaling agent manufacturer, not required for correct detergent dosage

Information on the display panel

| | |
|----|--|
| E2 | Motor fault. Call customer service! |
| E3 | Close the washing machine door properly; washing may be caught. |
| E5 | Turn on the tap, supply hose kinked/jammed; clean filter -> page 10, water pressure too low. |
| E6 | Detergent solution pump blocked; clean the detergent solution pump -> page 10. Drainage hose / waste pipe blocked; clean the drainage hose at the siphon -> page 10. |
| E8 | Turn off the tap and call customer service. |

Maintenance

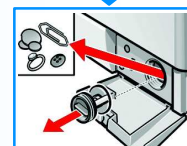
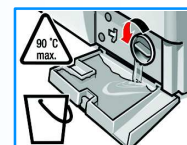
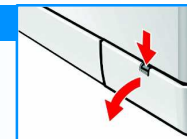


- Risk of scalding!
Allow detergent solution to cool down!
- Turn off the tap!

Detergent-solution pump

Set programme selector to **Off**, pull out the mains plug.

1. Open and remove service flap.
2. For models with drainage hose:
Take drainage hose out of the holder and pull out of the housing.
Remove sealing cap, allow detergent solution to flow out.
Press on sealing cap and insert drainage hose into the holder.
- 2* For models without drainage hose:
Carefully unscrew pump cover until the detergent solution begins to run out.
When the service flap is half full, screw back the pump cover and empty the service flap.
Repeat steps until all the detergent solution has run out.
3. Carefully unscrew the pump cover (residual water).
4. Clean the interior, pump cover thread and pump housing (fan impeller in the detergent-solution pump must rotate).
5. Reinsert and screw on pump cover.
6. Insert and close service flap.

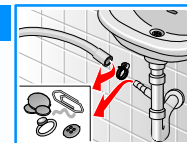


To prevent unused detergent from flowing into the outlet during the next wash:
Pour 1 litre of water into dispenser II and select the **Drain** programme.

Drainage hose at the siphon

Set programme selector to **Off**, pull out the mains plug.

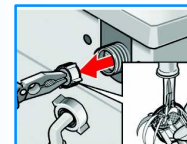
1. Loosen the hose clamp, carefully remove the drainage hose (residual water).
2. Clean the drainage hose and siphon connecting piece.
3. Reattach the drainage hose and secure the connection with the hose clamp.



Filters in the water supply

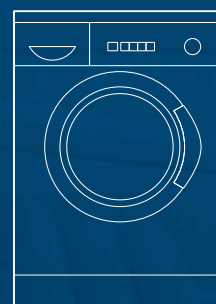
Release water pressure in the supply hose:

1. Turn off the tap!
2. Select any programme (except **Spin/Drain**).
3. Press **Start/Pause**. Leave programme for approx. 40 seconds.
4. Set programme selector to **Off**.
5. Remove hose from tap.
6. Clean filter with small brush.
7. Depending on the model, remove hose from the rear of the appliance and clean the filter.
8. Connect the hose and check for leaks.



What to do if ...

- Water is running out.
 - Correctly attach/replace drainage hose.
 - Tighten screw-fitting on the supply hose.
- Water not flowing in.
Detergent not washed in.
 - **Start/Pause** ◊ not selected?
 - Tap not open?
 - Filter blocked? Clean filter → *page 10*.
 - Supply hose kinked or jammed?
- Washing machine door cannot be opened.
 - Safety function active. Wait approx. 2 minutes.
 - ---- (without final spin) selected?
- Programme does not start.
 - **Start/Pause** ◊ selected?
 - Door closed?
- Detergent solution is not drained.
 - Clean detergent-solution pump → *page 10*.
 - Clean outlet pipe and/or drainage hose.
- Washing not spun correctly.
 - Distribute small and large items of washing in the drum.
- Spin cycle actuated several times.
 - Not a fault – unbalanced load detection system adjusts imbalance.
- Water not visible in the drum.
 - Not a fault – water below the visible area
- Residual water in the dispenser for care product.
 - Not a fault – effect of the care product not impaired.
- Odour formation in the washing machine.
 - Run **Cottons** 🧺 **Stains** 🧺 **90 °C** programme without washing. Use standard detergent.
- Foam is coming out of the detergent drawer.
 - Too much detergent used?
Mix 1 tablespoon of fabric softener with ½ litre of water and pour into compartment II (*not with outdoor fabrics!*).
 - Reduce detergent dosage for the next wash cycle.
- Vibrations during spin cycle.
 - Appliance feet fixed?
Secure appliance feet → *Installation instructions*.
 - Transportation safety devices removed?
Remove transportation safety devices
→ *Installation instructions*.
- Display panel/indicator lights do not function while the appliance is running.
 - Power failure?
 - Fuse tripped? Switch on/replace fuse.
 - If the fault occurs repeatedly, call customer service.
- Programme progress longer than usual.
 - Not a fault – unbalanced load detection system adjusts imbalance by repeatedly distributing the washing.
 - Not a fault – foam detection system active - a rinse cycle is started.
- Detergent residue on the washing.
 - Occasionally phosphate-free detergents contain water-insoluble residue.
 - Select **Rinse/Freshen up** 🧺 or brush the laundry after washing.
- If a fault cannot be rectified or a repair is required:
 - Set programme selector to **Off** and pull out the mains plug.
 - Turn off the tap and call customer service → *Installation instructions*.



Washing machine en

Operating instructions



Read these instructions before switching on the washing machine!
Also follow the separate installation instructions.
Follow the safety instructions on page 8!